

Version 1.0

(13.02.2019)

Installation Instructions

Complete Set Active Sound incl. Sound Booster

Porsche Cayenne 92A



Contents

Liability Exclusion	2
Copy Right	3
General Notes	3
Safety Instructions.....	4
Requirements for the determinable operation	4
Notes.....	5
Assembly Instructions.....	6
Software	11

Liability Exclusion

Dear Customer

Our cable sets are developed according to the connection- and circuit diagrams of the corresponding car manufacturer. Before the original production the cable sets will be tested on an original car. Therefore, the integration into the car electronics will be executed according to the instructions of the manufacturer. Regarding the necessary pre-understanding and the accuracy of the presentation of texts and pictures our mounting guidelines correspond to the usual ones in car technology and car electronics. Practically, they have been proved one's worth a hundred times.

However, should there be any difficulties during the installation of our products we will be at your disposal any time for support by phone or by mail. Moreover, we offer you to execute the installation at our works in Bad Segeberg.

Costs which may arise because a third person will execute the installation of our products will not be supported by us in any case. Only if there is a mistake caused by our product we will pay the proved costs of the installation as well as the costs of the removal of the defective product. The refund of expenses will be limited to gross EUR 110,- ; we reserve the right to check the described mistake in our works in Bad Segeberg. In case of a proved reclamation the costs for dispatch for the check in our factory will be transferred to you.

According to our experience each specific factory which has the necessary diagnostic device, diagnostic software and the circuit diagrams of the manufacturer can find possible mistakes at our products within a short time. So the installation and removal including diagnostic inspection can be realised in at most 60 minutes.

We also made the experience that many specific factories cannot work with the circuit diagrams of the manufacturer, and that they cannot read usual wiring diagrams. Therefore, very easy installation works will take many hours. You will understand that we neither take the risk to find a reliable specific factory nor the financing of the training of the staff of your favoured factory.

Costs which will arise because you buy missing parts or spare parts at other suppliers will be refunded by us up to the amount of the costs which had been arisen by additional supply (saved expenses). In this case, there would be no right for refund according to the legal guarantee right as long as we have no deadline for supplementary performance or a deadline for supplementary performance has not expired.

So if you have any problems with the installation or operation of one of our products please call us, send us an email, send us the product or take your car to our factory in Bad Segeberg. We are sure to find an appropriate solution for each concern.

With best regards,

Your Kufatec GmbH & Co. KG Team

Copy Right

Our installation- and removal instructions, installation plans, software and other documentation with texts or pictures are protected by copy right.

A publication or distribution of these documents is only permitted with a written approval of Kufatec GmbH & Co. KG.

General Notes

Regarding the development there has especially been paid attention to your personal safety together with the most possible operating comfort, modern design and actual product technologies.

Despite most possible accuracy in case of incorrect installation or use or in case of incorrect operating, it is possible that injuries or damages of property may arise.

Therefore, please read the operating instructions you have received carefully and completely, and keep it with you.

All articles of our production will be checked at 100% — for your safety.

We reserve the right to make technical changes which serve the progress at any time.

Before the installation or startup it may be necessary, depending on the article and purpose of use, to check the legal instructions of each country.

In case of warranty claim the device has to be sent to the seller originally packed together with the sales receipt and a detailed description of the mistake. Please consider the manufacturer's instructions for return (RMA). The legal warranty instructions are valid.

The warranty claim and also the permission for startup will expire in case of:

- *unauthorised changes on the device or the accessories which have not been executed or approved by the manufacturer or its partners*
- *opening of the box*
- *repair of the device on your own*
- *incorrect use / no normal use / startup*
- *influence of force on the device (falling down, wilful damage, accident, etc.)*

During the installation please consider all safety and legal instructions. The device may only be installed by trained qualified personnel or persons who are similar qualified.

In case of installation- or function problems please reduce the search of the mistake to approx. 0,5 hours for mechanical works or 1,0 hours for electronic works

To avoid unnecessary additional work and expenses, please send immediately an inquiry to our technical support with the Kufatec contact form (<http://www.kufatec.de/shop/de/infocenter/>).

Please absolutely mention the following:

- *car chassis number*
- *part number of the add-on kit*
- *exact description of the problem*
- *work steps already made*

Safety Instructions

The installation may only be executed by trained qualified personnel. Please execute the installations only in a condition of dead voltage. Here please separate for example the battery from the main power supply and consider the instructions of the car manufacturer.

- *In order to not endanger your own driving safety please never use security relevant screws, bolts or other fixation pieces at steering, brake system or other components.*
- *Connect the device only at 12V wiring system voltage with ground connection to the autobody. This assembly is not allowed for the use in trucks or other cars with 24V wiring system voltage..*
- *Please avoid the installation of the device at positions where the driving safety or the functional efficiency of other subassembly integrated in the car are restricted.*
- *This module may only be used together with the following mentioned car types and models; the installation may be executed exclusively by use of the circuit points mentioned in the assembly instructions.*
- *Kufatec GmbH & Co. KG does not assume liability for damages which are caused by incorrect installation, the use of inapplicable circuit points or the installation into car types and -modules which are not foreseen.*
- *We would like to draw your attention to the fact that the module processes the data of the MOSTprotocol of the car mentioned below. Therefore, during the installation of the module it will be used a model-specific complete system which we as the manufacturer of the mentioned construction line only know partly.*
- *Especially in case of changes within the same model line and the same year we therefore cannot guarantee the applicability of our construction line in each case. Kufatec GmbH & Co. KG does not assume liability for the applicability of our construction line with changes made by the manufacturer.*
- *Kufatec GmbH & Co. KG does not assume liability that the installation of the here described component has been permitted according to the guarantee instructions of particular car manufacturers. Therefore, please consider the guidelines for installation and guarantee conditions of your car manufacturer before installation.*
- *The manufacturer reserves the right to change components without giving reasons.*
- *Subject to errors and changes.*

Requirements for the determinable operation

Please use the device only in its the corresponding area.

In case of unprofessional and untypical use, installation or modification the permission for operation and the warranty claim will expire

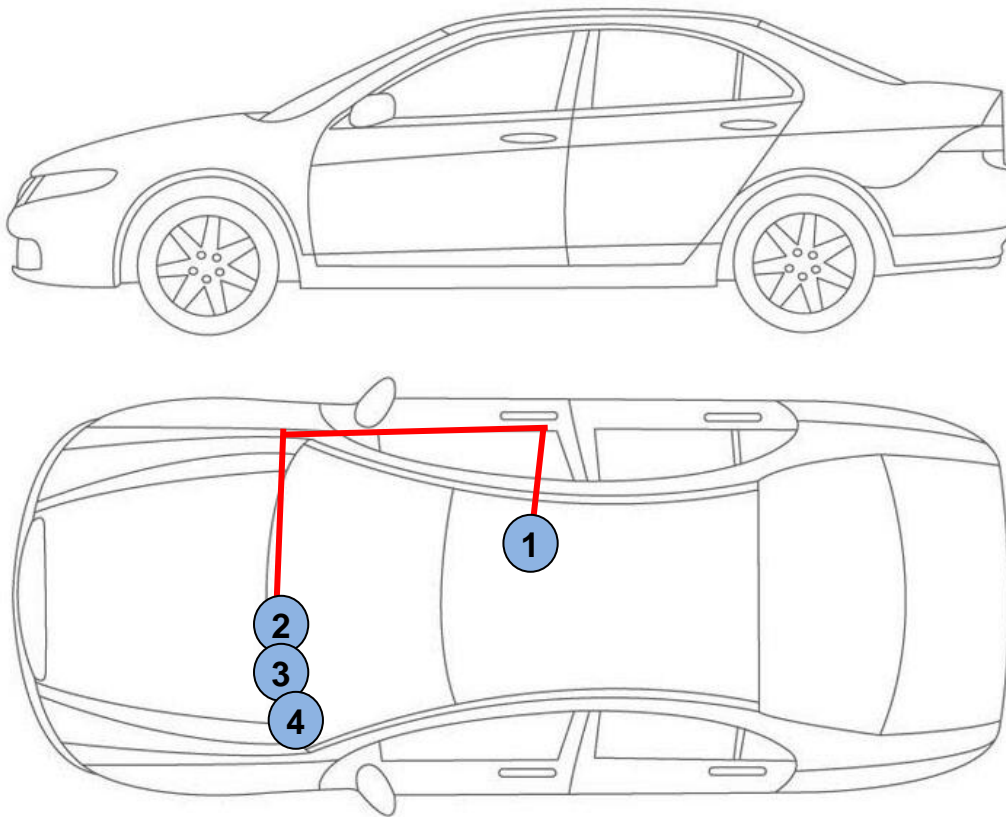
Notes

NOTE: The use of a sound booster is not permitted without registration in the vehicle papers, in the area of the german StVZO. The noise emission of the vehicle is increased by this retrofit. The regulations of the StVZO must be observed. It is therefore recommended to ask for a specific registration option at the responsible TÜV/DEKRA office before retrofitting. Outside Germany, please observe the laws on vehicle licensing applicable in your country

NOTE: Make sure that there's enough space at the described position. If there is no space, please cancel the installation and contact our technical support.

Assembly Instructions

The following illustration shows the cable routing as well as the position of the individual components.



Vehicle overview

- 1 – External sound generator incl. holder**
- 2 – Control unit**
- 3 – Sound Booster Pro module**
- 4 – Button**

Remove the covering underneath the dashboard (Fig. 1) as well as the cover of the fuse box (Fig. 2). Connect the CAN cables to the gateway (see below). The gateway is located underneath the dashboard on the driver's side (Fig. 3).



Fig. 1



Fig. 2

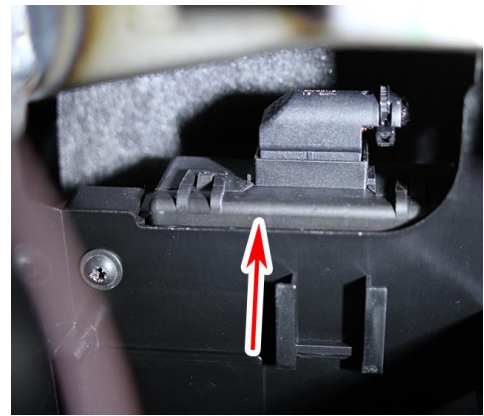


Fig. 3

CAN High (black/white) - Pin 16 (orange/black)

CAN Low (black/yellow) - Pin 6 (orange/brown)

Isolate the cables with electrical tape afterwards.

Connect the ground cable (brown) to the ground pin located at the left holder of the dashboard (Fig. 4). Connect the ignition plus cable (red/white) to the fuse box in slot 43 (Fig. 5,6). If slot 43 is occupied, use slot 44. Secure the cable with a 7,5A-fuse. Check the correct connection of ignition plus by measuring the voltage.

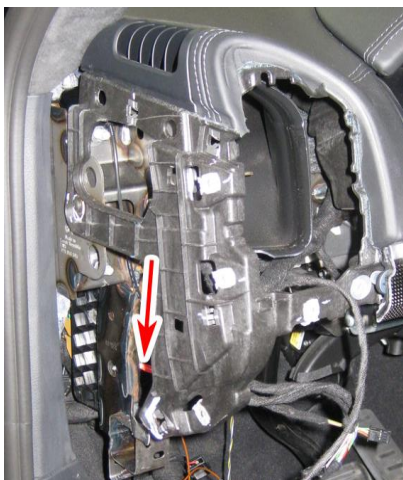


Fig. 4

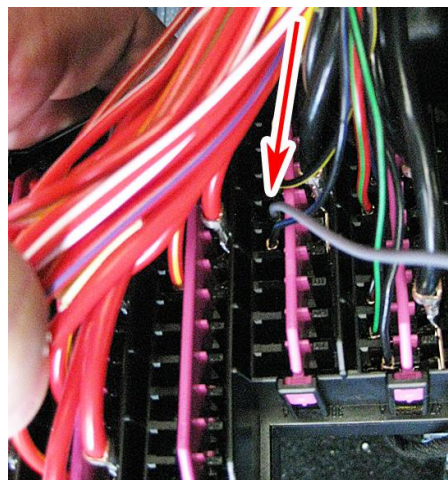


Fig. 5

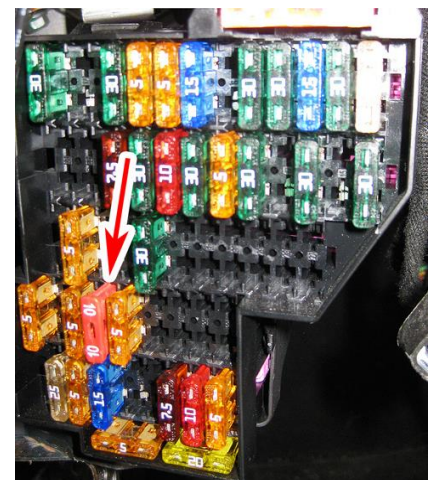


Fig. 6

Assemble both control units at the left A-column underneath the dashboard and behind the carpet by using factory materials (Fig. 7,8).

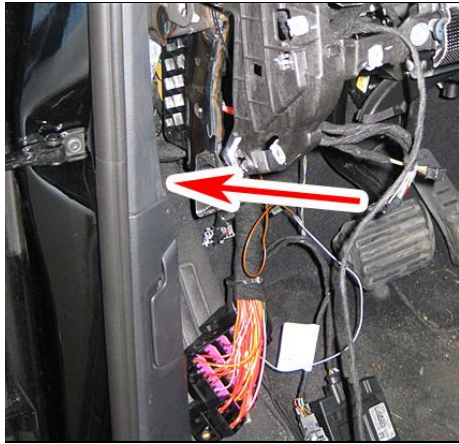


Fig. 7

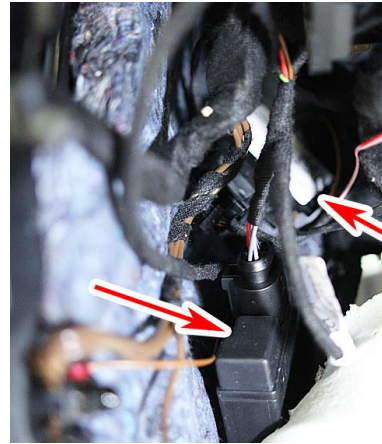


Fig. 8

Lay the cable underneath the dashboard from the driver's side to the passenger's side (Fig. 9) and along the right A-column to the sill trim (Fig. 10).

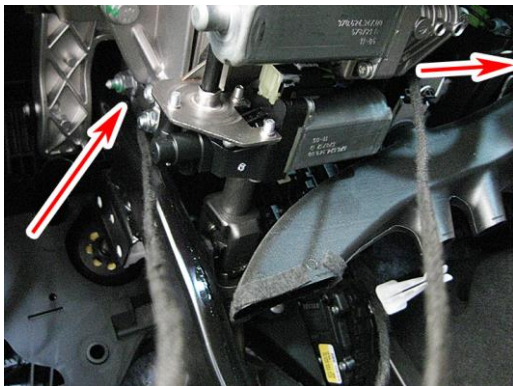


Fig. 9

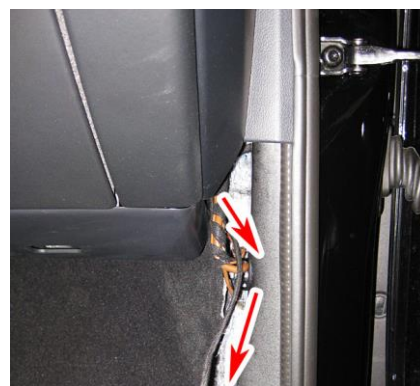


Fig. 10

Lay the cables underneath the carpet on the passenger's side to the B-column (Fig. 11) and from there to the center console (Fig. 12). Loosen the B-column covering to do so (Fig. 13).



Fig. 11

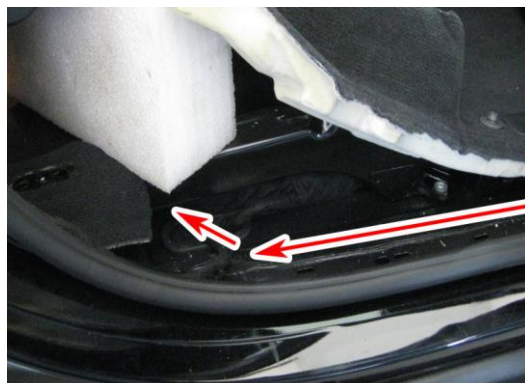


Fig. 12



Fig. 13

Lay the cable underneath the passenger's seat to the center console (Fig. 14). Remove the seat to do so. The routing of the cable to the external sound generator is shown in Fig. 15 and 16. Pull the cable through the rubber grommet from the interior (Fig. 14) to the outside (Fig. 15). Waterproof the grommet afterwards.



Fig. 14



Fig. 15

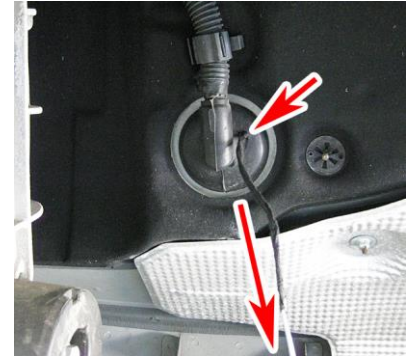


Fig. 16

Cut off the exhaust pipe (Fig. 17) approximately 17cm behind the second bend (underneath the heat protection plate). Assemble the external sound generator (Fig. 18) and connect it to the previously layed cable (Fig. 19).

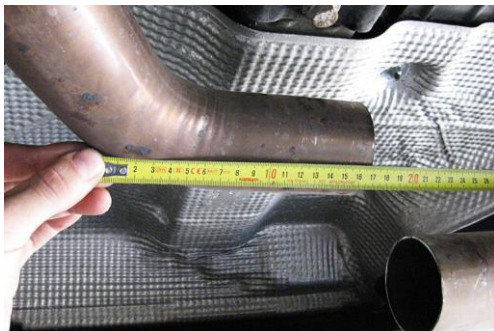


Fig. 17

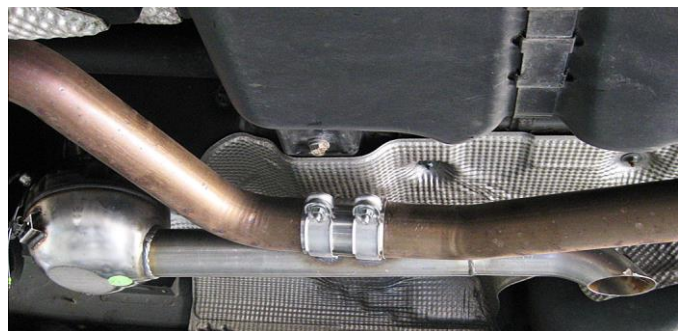


Fig. 18

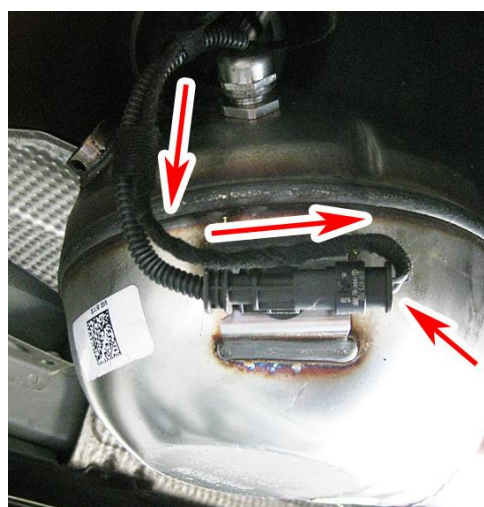


Fig. 19

As additional safety the delivered steel cable and the retaining clips have to be attached to the Sound Booster as well as at a suitable position to the car. This safety cable is an additional security should the tightening screws be released due to the vibration.

Please use suitable screws that can withstand high loads of impact to attach the sound generator. In order to avoid loosening of the screws due to the vibration, please secure the screws with appropriate factory material e.g threadlock. Please additionally check the stability of the Sound Booster regularly and if necessary retighten the screws. In case of non-compliance we do not assume liability for possible damages.

After a successful installation we recommend to cover the sound generator with a zinc spray. Make sure that you cover the opening of the sound generator so that the zinc spray can't get inside the sound generator.

Lay the cable for the button that controls the sounds. We advise to assemble the button underneath the dashboard at an invisible position (Fig. 20,21).



Fig. 20



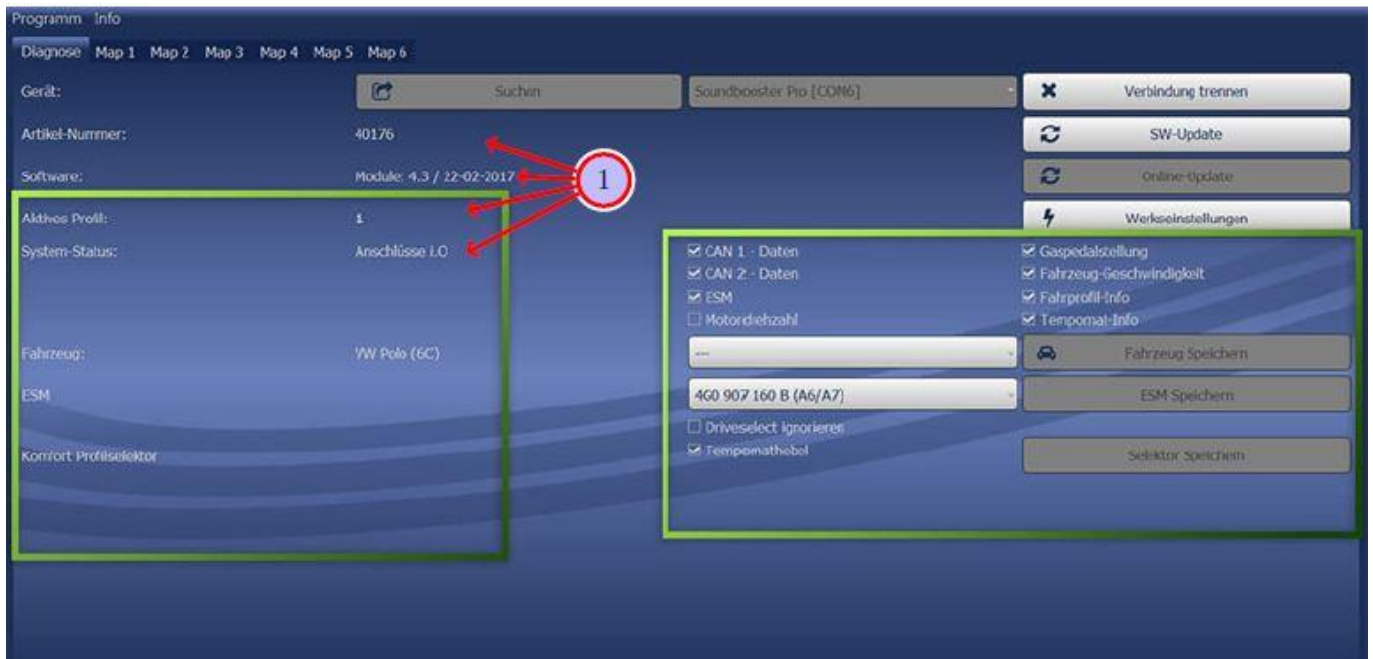
Fig. 21

Attention: A 7mm drill is needed for the drilling/holes!

Assemble everything back in reverse order. Wait for the bus rest afterwards. Switch off the ignition, close all doors, lock the car and leave it for about 10 minutes. The assembly is finished afterwards.

Use the button to switch the sound. You can choose between 6 sound profiles. Level 1-3 generates a discreet sound for noise sensitive areas. Level 4-6 generates a strong V6/V8 sound that is very powerful.

Software



If the system does not work after the installation, please check if the system was installed correctly by having a look at the following link: <https://www.sound-booster.com/en/debugging.html>.

Our Sound Booster Software for PC / Mac should be used for the commissioning or further debugging.

Step 1: Download the appropriate software via the following link: <https://www.sound-booster.com>

Step 2: Turn the ignition of the vehicle on and only then connect the PC / Mac with a USB-cable to our module.

It is important to check beforehand if plus and minus are connected correctly.

If this is not the case, it could result in a damage to the computer or to the control unit.

Step 3: Start the downloaded software and click on search first and then on connect.

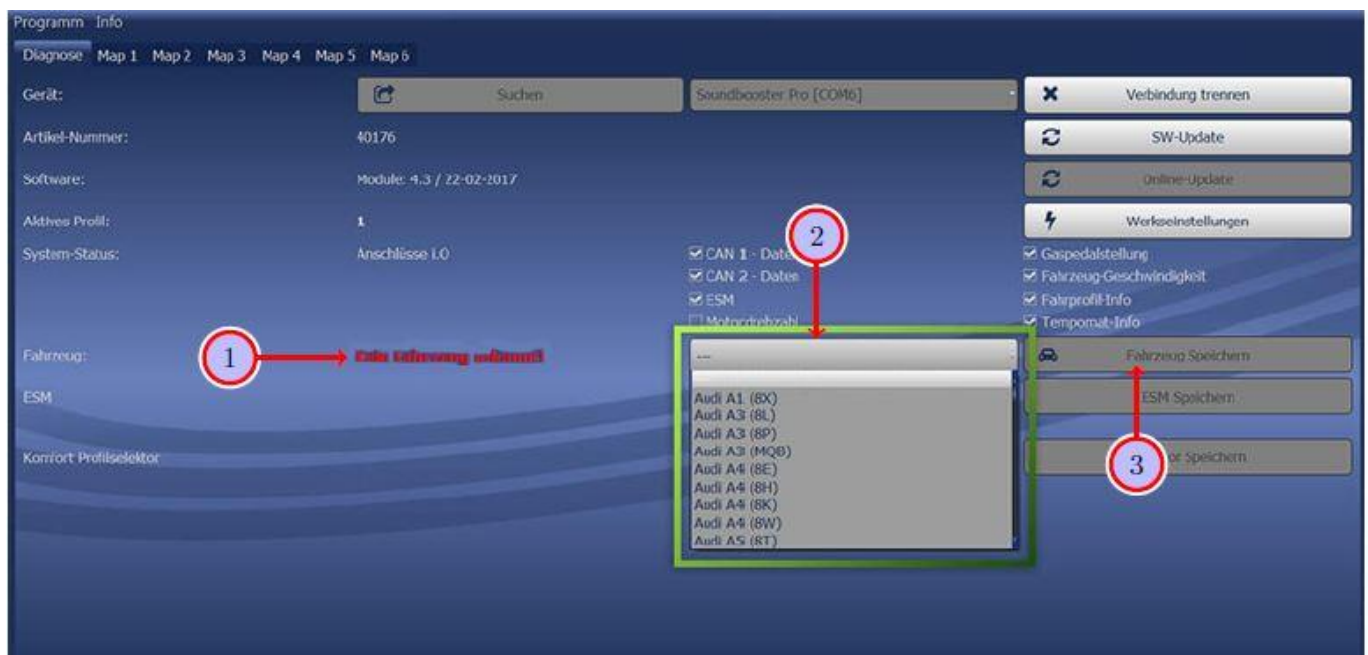
You will be automatically forwarded to the diagnosis site, on which you can see the following things at a glance:

Software: Software version / creation date

Active Profile: The currently activated profile is indicated here.

Vehicle: The automatically identified vehicle is indicated here.

System Status: Here you are able to tell if the connections are correct.

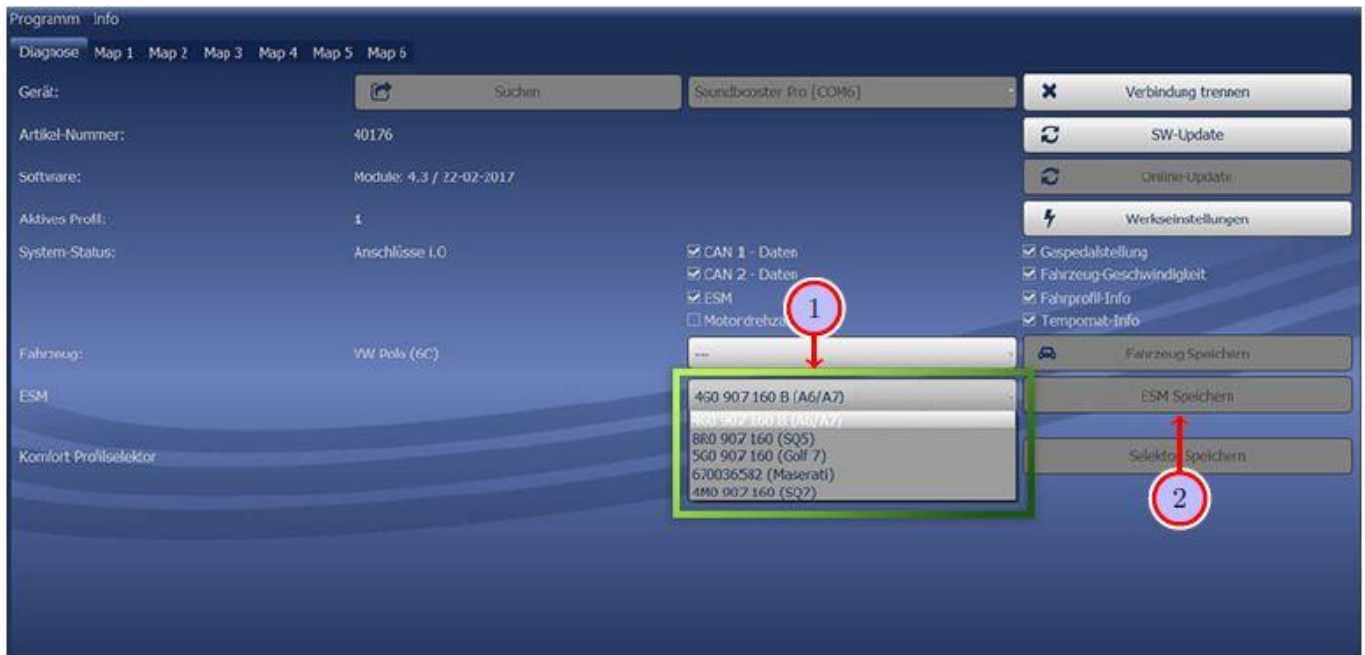


If no current vehicle is identified (see 1), you have to select the vehicle via the manual selection as follows:

Open the dropdown-menu (see 2), search for your vehicle and select it.

Click on Save Car (see 3) to permanently save the vehicle to the module.

If you don't find your vehicle in the list, it might be necessary that the software has to be adapted to your vehicle. In that case, please contact us via e-mail: info@kufatec.de or by phone: +49 (0) 4551 / 80 810 888. We will make an appointment with you, where we will adapt the software to your vehicle per Team Viewer (remote maintenance).



You also need to check if the right ESM is selected in our software:

Open the dropdown-menu (see 1), search for the correct ESM and select it.
Click on Save ESM (see 2) to permanently save the ESM to the module.

For example, if you ordered a complete set with a Audi control unit you need to select the ESM **4G0 907 160 B (A6/A7)**. If you installed the Maserati control unit instead of the Audi control unit you need to select the ESM **670036582 (Maserati)**.

If the system does not work after all please get in contact with us via e-mail: info@kufatec.de or by phone: +49 (0) 4551 / 80 810 888. We will make sure to check the issue as soon as possible.